

CRB-EQ

THOMSON REUTERS | JEFFERIES

COMPOSITE

Contact Information

Joseph LaCorte, CFA
S-Network Global Indexes, LLC
(646) 467-7927
jlacorte@snetworkllc.com

Licensed ETF

Jefferies | TR/J CRB Global Commodity Equity Index Fund

Ticker: CRBQ

This is not an offer to purchase or sell shares of the above listed funds. All purchases or sales of shares must be pursuant to a current prospectus for the relevant fund or funds.

Information about the index, including rule book, company descriptions and historic data, can be found at: www.crbequityindexes.com

TICKER:

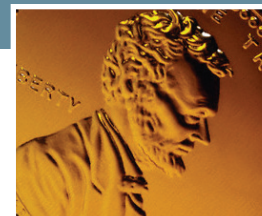
Thomson Reuters/Jefferies
CRB In-The-Ground Global
Commodity Equity Index (USD):

CRBQX

June 2011

Inquire about our custom institutional benchmarking services

This material has been prepared and/or issued by S-Network Global Indexes LLC and/or one of its consultants or affiliates. This document is for information purposes only and it should not be regarded as an offer to sell or as a solicitation of an offer to buy the securities or other instruments mentioned in it. The information, including any third party information, may not be accurate or complete in its entirety, and it should not be relied upon as such. S-Network Global Indexes LLC and/or its affiliates are not acting in a fiduciary capacity. The products mentioned herein may not be eligible for sale in some states or countries and may not be suitable for all investors. The potential yield created by these products may be adversely affected by exchange rates, interest rates, or other economic and political factors. An investor's return may be less than the principle invested. S-Network Global Indexes LLC and/or its affiliates may now, in the past, or in the future make markets, or deal as principle in the securities or derivatives thereof, mentioned in the document. In addition, S-Network Global Indexes LLC, its shareholders, directors, officers, and/or employees and consultants, may from time to time hold a long or short position in these securities. This document may not be reproduced in any manner without the prior written authorization of S-Network Global Indexes LLC. Opinions expressed within reflect the opinions of S-Network Global Indexes LLC and the author/analyst and are subject to change without notice.



Thomson Reuters/Jefferies CRB In-The-Ground Global Commodity Equity Index

Index Description. The Thomson Reuters/Jefferies CRB In-The-Ground Global Commodity Equity Index (TICKER: CRBQX) decreased -5.13% from 3893.29 to 3693.65 in the second quarter of 2011. This compares to a decrease in the futures-based Thomson Reuters/Jefferies CRB Commodity Total Return Index (TICKER: CRYTR) of -5.94% and a decrease in the S&P 500 of -0.39%.

The Base/Industrial Metals sector showed the strongest performance contributing approximately -3.28% during the quarter. The Precious Metals sector showed the worst performance contributing approximately -7.93% to the index.

The best performing stocks were ThyssenKrupp (TICKER: TKA GR), which rose +25.60%; Quimica y Minera de Chile (TICKER: SQM US), which rose +17.12%; and First Quantum Minerals Ltd (TICKER: FM CN), which rose +12.77%. The worst performing stocks were Coeur d'Alene Mines Corp (TICKER: CDE US), which declined -30.25%; Chaoda Modern Agriculture (TICKER: 682 HK), which declined -30.06%; and Petropavlovsk Plc (TICKER: POG LN), which declined -26.84%.

The Thomson Reuters/Jefferies CRB In-The-Ground Global Commodity Equity Index is up +1.90% year-to-date and up +42.85% in the last 12 months.

Index Description. Thomson Reuters/Jefferies CRB In-The-Ground Global Commodity Equity Index (TICKER: CRBQX) is an equity index designed to serve as a benchmark for globally traded stocks that are principally engaged in the production and distribution of commodities, including energy, metals and agricultural products. The CRBQX employs a modified capitalization weighting methodology designed to assure accurate investment exposure across the various business segments that together comprise the global commodity producers industry.

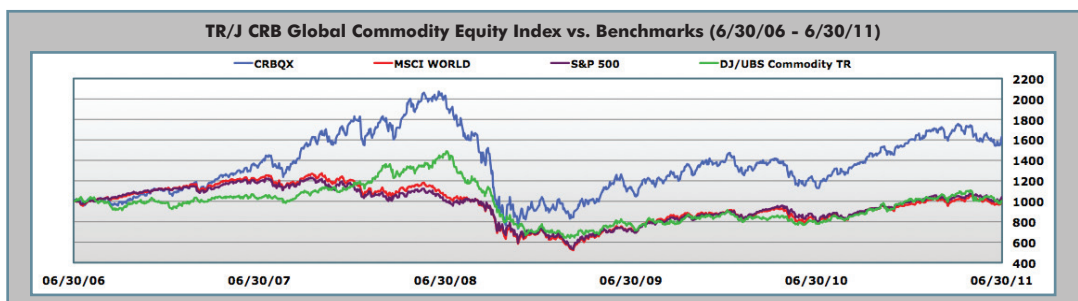
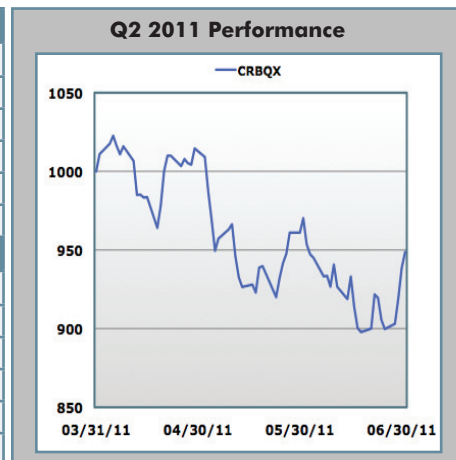
Inclusion Criteria. All constituents in the CRBQX are "principally" engaged in the production of commodities. For the purposes of the CRBQX, a principally engaged company must derive 50% or more of its annual revenues from its participation in its applicable industry. The CRBQX contains stocks selected from a universe of approximately 1500 companies worldwide that pass the applicable revenue tests. Stocks eligible for inclusion in the CRBQX must trade on an approved stock exchange, either as an ordinary, ADR or GDR, and have no material restrictions on foreign investment. Stocks must have a minimum market capitalization of USD 750 million (USD 1 billion for energy stocks) and have average daily turnover in excess of USD 1 million per day.

Weighting Methodology. The CRBQX is divided into four sectors and the aggregate weight of each sector is fixed based on estimates of 3-year average global production and/or consumption of the relevant commodity. Adjustments are made for precious metals to account for its role as a financial asset. Sector weights are revised annually. Individual companies are weighted within their sectors based on a capitalization weighting methodology, adjusted for free float, and then modified by the applicable sector weight.

Rebalancings. The CRBQX is rebalanced quarterly on the third Friday of the last month of each calendar quarter. Sector weights are adjusted to reflect the annually revised sector weight at each rebalancing. Sector weights are revised annually on the third Friday of December.

Index Data. The CRBQX contains a fixed number of 150 constituents and is calculated in real time by the New York Stock Exchange. Deletions between rebalancings are not replaced. Index values are distributed throughout the day at fifteen second intervals in U.S. Dollars. The CRBQX is calculated on both a price only and total return basis. Daily values are available from December 31, 1999.

Leading Movers				
Company Name	Ticker	Opening	Closing	Change
THYSSENKRUPP	TKA GR	40.967	51.452	25.60%
QUIMICA Y MINERA DE CHILE	SQM US	55.260	64.720	17.12%
FIRST QUANTUM MINERALS LTD	FM CN	129.326	145.841	12.77%
ROYAL GOLD INC	RGLD US	52.400	58.570	11.77%
YARA INTERNATIONAL	YAR NO	50.695	56.303	11.06%
Lagging Movers				
Company Name	Ticker	Opening	Closing	Change
COEUR D'ALENE MINES CORP	CDE US	34.780	24.260	-30.25%
CHAODA MODERN AGRICULTURE	682 HK	0.621	0.434	-30.06%
PETROPAVLOVSK PLC	POG LN	16.032	11.729	-26.84%
CIA SIDERURGICA NACIONAL	SID US	16.660	12.460	-25.21%
SILVER WHEATON CORP	SLW CN	43.432	33.012	-23.99%



*Note: This chart is a normalized historical graph
Data Source: S-Network Data as of June 30, 2011.

This chart is for illustrative purposes only. Historical information is not indicative of future results; current data may differ from data quoted. Investors cannot invest directly in index. Index returns do not reflect any management fees or brokerage expenses.

Index Statistical Profile

Capitalization Profile

Number of constituents	150
TOTAL MARKET CAPITALIZATION	5.77 Trillion USD
LARGEST MARKET CAPITALIZATION	400.88 Billion USD
SMALLEST MARKET CAPITALIZATION	1.26 Billion USD
AVERAGE MARKET CAPITALIZATION	38.44 Billion USD
MEDIAN MARKET CAPITALIZATION	17.03 Billion USD

Simple Price Appreciation

	CRBQX	MSCI WORLD	S&P 500	DJ UBS TR	S&P GSCI TR	S&P Global NR Index
5 Year	63.020%	0.852%	3.971%	-0.243%	-27.219%	30.807%
3 Year	-19.832%	-5.060%	3.175%	-31.545%	-51.920%	-17.428%
1 Year	42.852%	27.836%	28.129%	25.907%	26.110%	35.399%

Compound Annual Growth Rate (CAGR)

	CRBQX	MSCI WORLD	S&P 500	DJ UBS TR	S&P GSCI TR	S&P Global NR Index
5 Year	10.268%	0.170%	0.782%	-0.049%	-6.157%	5.518%
3 Year	-7.103%	-1.716%	1.047%	-11.868%	-21.659%	-6.184%
1 Year	42.852%	27.836%	28.129%	25.907%	26.110%	35.399%

Annualized Standard Deviation (Monthly)

	CRBQX	MSCI WORLD	S&P 500	DJ UBS TR	S&P GSCI TR	S&P Global NR Index
5 Year	25.833%	19.313%	17.896%	20.863%	27.501%	23.349%
3 Year	29.714%	23.193%	21.229%	22.926%	30.250%	25.914%
1 Year	16.350%	15.522%	13.835%	16.973%	18.555%	17.512%

Sharpe Ratio

	CRBQX	MSCI WORLD	S&P 500	DJ UBS TR	S&P GSCI TR	S&P Global NR Index
5 Year	0.392	0.002	0.036	-0.009	-0.229	0.231
3 Year	-0.243	-0.080	0.043	-0.523	-0.720	-0.244
1 Year	2.613	1.785	2.024	1.519	1.400	2.014

* Annualized average 3M T-Bill return of 0.129% used for Sharpe Ratio calculation

Top Ten Constituents

Company	Ticker	Country	Weight
POTASH CORP OF SASKATCHEWAN	POT CN	CANADA	6.02%
EXXON MOBIL CORP	XOM US	UNITED STATES	5.52%
MONSANTO CO	MON US	UNITED STATES	4.79%
DEERE & CO	DE US	UNITED STATES	4.27%
SYNGENTA	SYNN VX	SWITZERLAND	3.93%
CHEVRON CORP	CVX US	UNITED STATES	2.85%
GAZPROM	OGZD LI	RUSSIA	2.38%
ARCHER-DANIELS-MIDLAND CO	ADM US	UNITED STATES	2.37%
BP PLC	BP/ LN	BRITAIN	1.91%
TOTAL SA	FP FP	FRANCE	1.88%

Correlation Matrix (5 Year/Daily)

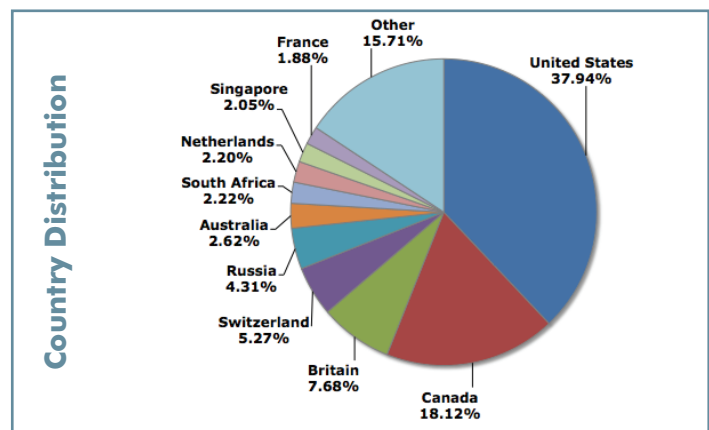
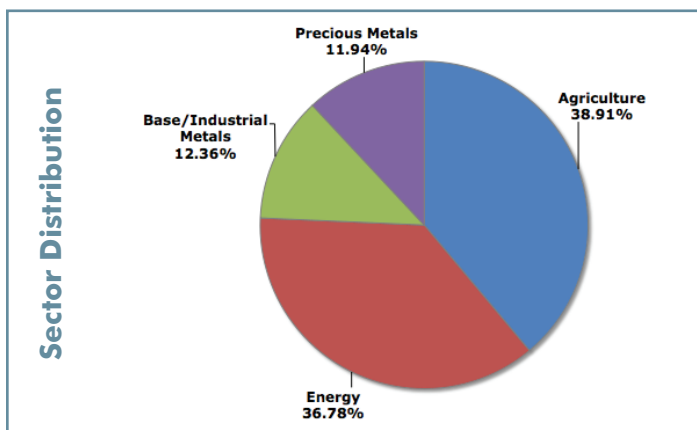
	CRBQX	MSCI WORLD	S&P 500	DJ UBS TR	S&P GSCI TR	S&P Global NR Index
CRBQX	1.0000					
MSCI WORLD	0.8805	1.0000				
S&P 500	0.7430	0.8759	1.0000			
DJ UBS TR	0.6449	0.5154	0.3554	1.0000		
S&P GSCI TR	0.6209	0.5057	0.3726	0.9218	1.0000	
S&P Global NR Index	0.9587	0.8935	0.7166	0.6414	0.6266	1.0000

BETA Matrix (5 Year/Daily)

	CRBQX	MSCI WORLD	S&P 500	DJ UBS TR	S&P GSCI TR	S&P Global NR Index
CRBQX	1.0000					
MSCI WORLD	1.2944	1.0000				
S&P 500	0.9194	0.7373	1.0000			
DJ UBS TR	0.9433	0.5128	0.4201	1.0000		
S&P GSCI TR	0.6769	0.3751	0.3283	0.6872	1.0000	
S&P Global NR Index	1.0374	0.6577	0.6266	0.4745	0.6219	1.0000

*All data as of June 30, 2011.

Index Composition



This information, including the Thomson Reuters/Jefferies CRB In-The-Ground Global Commodity Equity Index (CRBQX) and related indices and sub-indices (collectively the "CRB-EQ Indices") and materials relating thereto, is the property of S-Network Global Indexes LLC ("SNGI"). SNGI is the designer of the construction and methodology for the CRB-EQ Indices and is responsible for the content of this information. Reuters America LLC or its affiliates ("Thomson Reuters") and/or Jefferies Financial Products, LLC or its affiliates ("Jefferies") act as brand licensors for the CRB-EQ Indices. This information may not be used to create, offer, trade, market or promote any financial products without the express written consent of SNGI, which may be withheld for any reason including the objections of Jefferies or Thomson Reuters. All historical data for the CRB-EQ Indices before their respective initial launch dates (as to each, the "Initial Launch Date") are simulated by applying the index construction and methodology at the Initial Launch Date, which was designed with the benefit of hindsight, to available historical equity values. Simulated historical returns do not reflect the impact (if any) of market disruption or market emergency events. Simulated historical returns do not reflect the impact that material changes in the underlying markets might have had on the decisions to use or continue using certain securities and weightings in the CRB-EQ Indices. None of SNGI, Jefferies, Thomson Reuters or any other of their subsidiaries or affiliates makes any representations as to the accuracy, completeness or timeliness of the information herein. None of Jefferies, Thomson Reuters or any of their subsidiaries or affiliates shall have any liability, contingent or otherwise, to any person or entity for the quality, accuracy, timeliness and/or completeness of the information contained herein, the CRB-EQ Indices, or for delays, errors, omissions or interruptions in the publication of the CRB-EQ Indices or any related data. Thomson Reuters performs certain services for SNGI with respect to the CRB-EQ Indices including the calculation and dissemination of index values. SNGI, Thomson Reuters and Jefferies may operate and market other indices that may compete with the CRB-EQ Indices, and they and their affiliates and their respective directors, officers and employees may buy or sell securities mentioned or contemplated herein as agent or as principal for their own account and may have positions or engage in transactions based on or indexed to the CRB-EQ Indices. It is possible that such trading activity will affect the value of the CRB-EQ Indices. SNGI, Jefferies, Thomson Reuters and their subsidiaries and affiliates including directors, officers and employees, with respect to use of this material or the CRB-EQ Indices, including but not limited to the trading of or investments in products based on or related to the CRB-EQ Indices, (a) make no warranty, express or implied, as to the results to be obtained by any person or entity, (b) make no warranty, express or implied, and expressly disclaim any warranty or merchantability or fitness for a particular purpose, and (c) without limiting any of the foregoing, shall have no liability for any direct, indirect, special, punitive, consequential or any other damages (including lost profits), even if notified of the possibility of such damages. Certain third parties, pursuant to license agreements with SNGI, may create, offer, trade, market and promote financial products or transactions based on, indexed to, or calculated with regard to, the CRB-EQ Indices (the "Third Party Products"). SNGI, Jefferies, Thomson Reuters and their subsidiaries and affiliates do not sponsor or endorse any Third Party Products, except as expressly and duly acknowledged by the applicable SNGI, Jefferies or Thomson Reuters entity, and SNGI may operate the CRB-EQ Indices without regard to the possible effects on such Third Party Products. This is not an offer or solicitation of an offer to buy or sell any security or investment. Past performance of the CRB-EQ Indices is not necessarily indicative of future results.